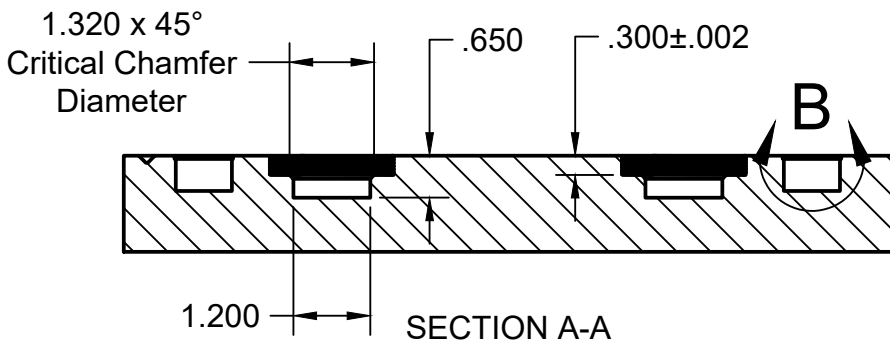


DETAIL B

Ø.250 Drillpoint
(Acts as a pressure relief when
unlocking pallets from Base)

1.9375-20 UN-2B
∇.250 minimum thread
(Minor dia of 1.8875")

Machine Pads
.005"-.020" below
surface of mat'l
first to establish
the Z0.0 plane.
All other features
are dimensioned
from this plane.



Notes:

- 1 - Part is symmetrical
- 2 - Pallets can range in size from 8"x12" to 10"x16"
- 3 - Use 1/32 Keyseat Cutter, McMaster-Carr PN 2970A13 for snap ring groove.

UNLESS OTHERWISE SPECIFIED:
Dimensions are in inches.
Tolerance: .XXX = ±.005

Pierson Workholding
PPS Pallet Dimensions
For use with p/n "PPS-Hardware"
www.piersonworkholding.com